

REV	DESCRIPTION	DRAWN	CHECKED	APPROVED
A	NEW RELEASE	ZQJ 11/18/2014		

NOTES:
1. SPECIFICATIONS

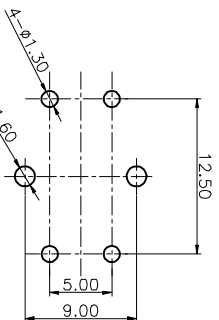
- switch function: Single pole Single throw
- contact rating: 50mA at 12vdc
- insulation resistance:100M Ω min at 500vdc
- contact resistance:100m Ω max
- operating life:100,00 cycles
- operating force: see below
- stop strength: place the switch such that vertical, a static load of 3kgf shall be applied in the direction of stem,operation for a period of 15 secs.
- stroke: (6x6)0.25 $^{+0.2mm/-0.1mm}$ (12x12)0.35 \pm 0.1mm
- operation temperature range: -20°C to 70°C
- storage temperature range: -20°C to +70°C
- wave soldering: recommended solder temperature at 500 \pm (260°C)/max. 5 seconds,subject to pcb 1.6mm thickness.
- hand soldering: use soldering iron of 30 watts,controlled at 608 \pm (320°C),approximately 2 seconds while applying solder.

3. PRODUCT NUMBER CODE:

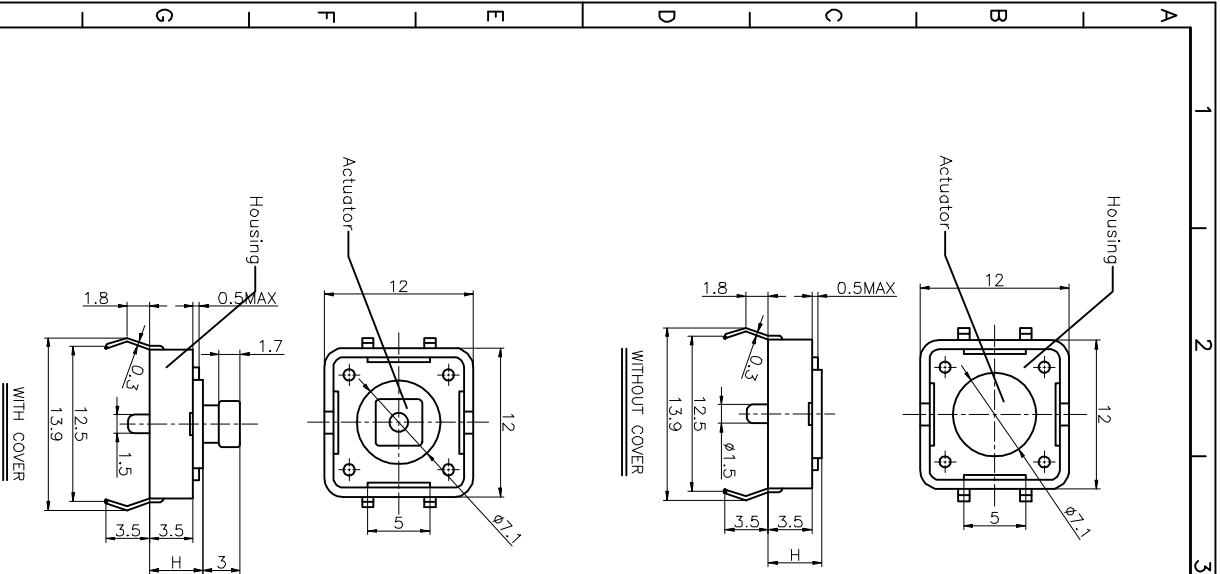
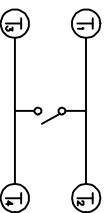
LL1052

- Operating Life
5: 50000 cycles
10: 100000 cycles
- Operating force
130: 130gf 160: 160gf
170: 170gf 250: 250gf
- Cover type
X: W/O cover
S: W/O cover
- Packing type
A: polybag
B: tube
- Actuator color
U: blue K: black N: brown R: red
S: Salmon Y: yellow
- Housing color
U: blue K: black N: brown R: red
S: Salmon Y: yellow
- Profile Height(DIM. H)
1:4.3mm 2:5.0mm 3:7.0mm 4:7.5mm
5:9.5mm 6:13.0mm 7:7.5mm 8:8.0mm
9:8.5mm 10:12.0mm 11:12.5mm 12:17.0mm
13:7.8mm 14:9.0mm 15:10.0mm 16:11.0mm

RECOMMEND P.C.B.LAYOUT
TOLERANCE=±0.05



SCHEMATIC



GENERAL TOLERANCE	ANGLE	TOLERANCE
X	±5°	
.X	±3°	
.XX	±0.25	

PROJECTION	TITLE	TACT SWITCH DIP TYPE
UNITS		
SHEET SIZE	A4	
SERIES	LL1052	

DRAWING TYPE	CUSTOMER
SCALE	1:1
SHEET	1 OF 1
DRAWING NO.	

慈溪蓝翎电子有限公司
CIXI LANLING ELECTRONICS CO., LTD.
Tel: 86-574-83519096 Fax: 86-574-83517070