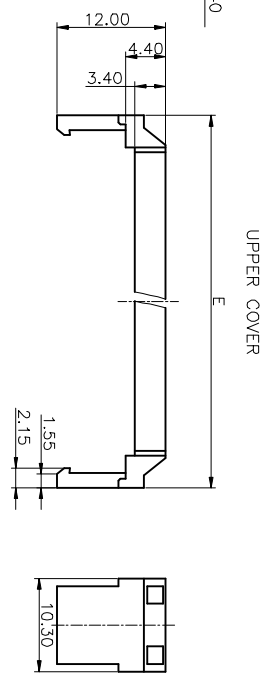
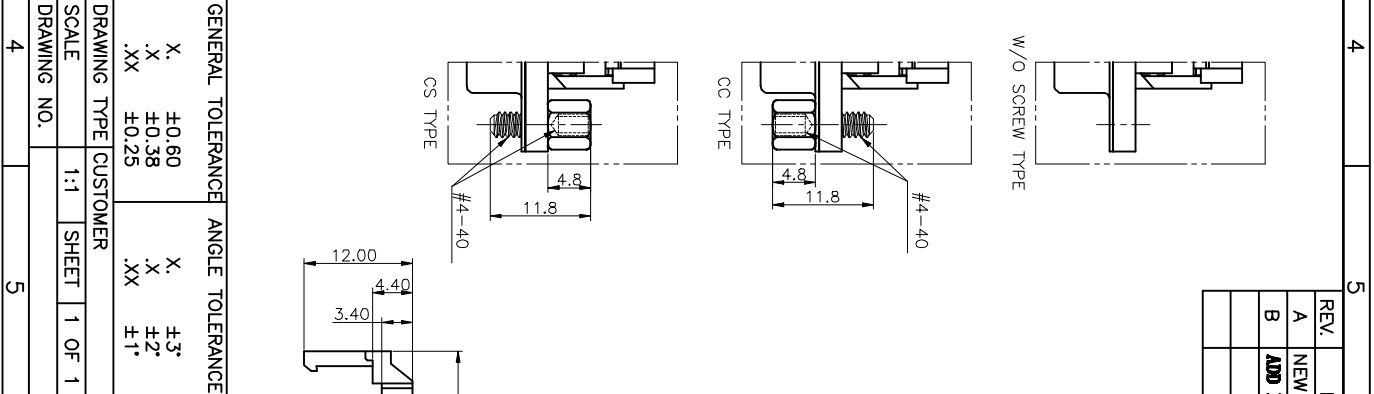
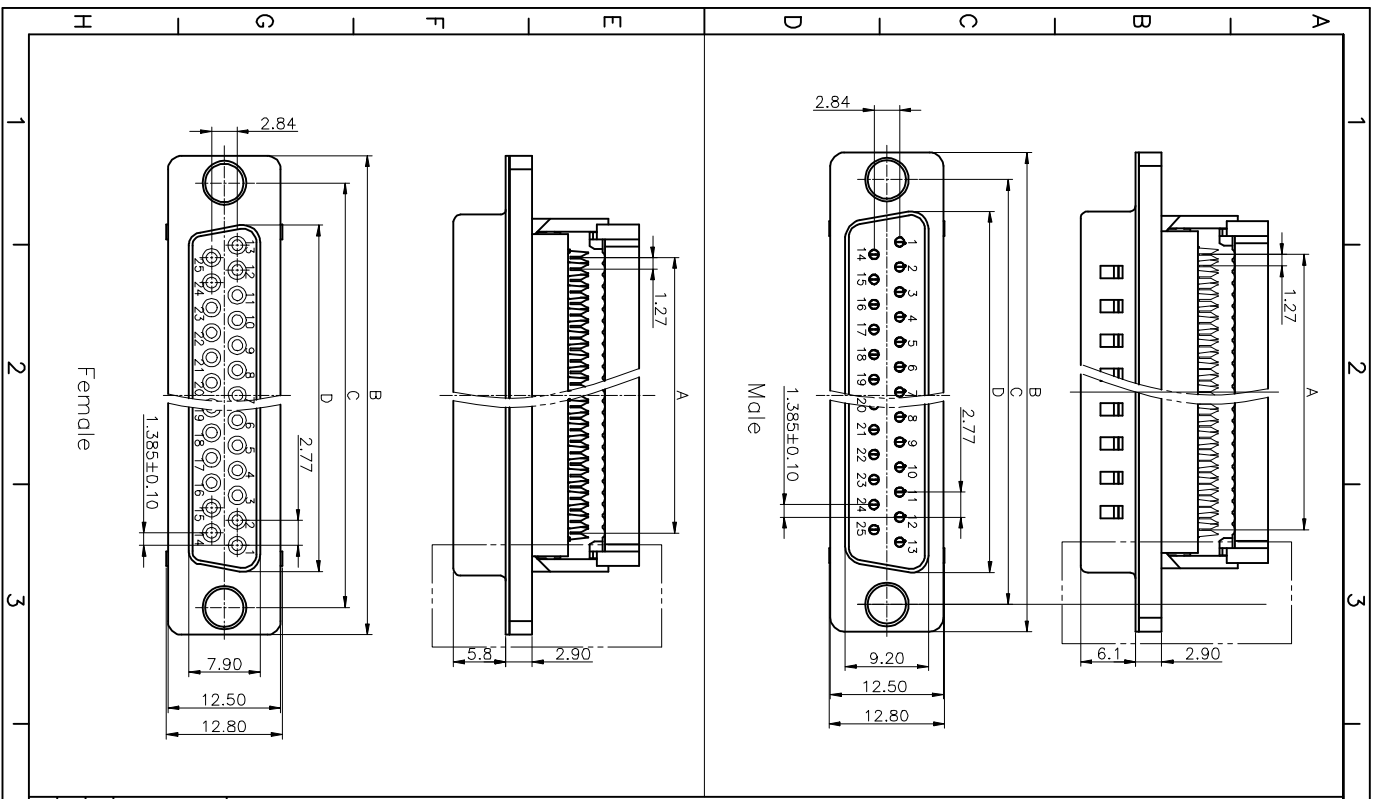


REV.	DESCRIPTION	DRAWN	CHECKED	APPROVED
A	NEW RELEASE	ZQJ 11/18/2014	~	ZQJ 11/18/2014
B	ADD P/N CODE	CJJ 11/18/2014	~	

- NOTES:
- ELECTRICAL CHARACTERISTICS:
    - 1.1 CONTACT RESISTANCE: 30mΩ Max. INITIAL.
    - 1.2 DIELECTRIC WITHSTANDING VOLTAGE: 500V AC(rms) FOR 1 MINUTE.
    - 1.3 INSULATION RESISTANCE: 1000MΩ Min.
  - MECHANICAL CHARACTERISTICS:
    - 2.1 DURABILITY: 300 CYCLES.
  - ENVIRONMENT CHARACTERISTICS:
    3. TEMPERATURE RANGE: -40°C~+105°C.

Position	A±0.1	B±0.2	C±0.2	D±0.2	E±0.2
9P	10.16	30.80	24.99	17.90	16.33
15P	17.78	39.14	33.32	26.50	24.66
25P	30.48	53.04	47.04	40.00	38.58
37P	45.72	69.32	63.50	56.50	54.84



GENERAL TOLERANCE		ANGLE TOLERANCE		PROJECTION	
X	±0.60	X	±3°	mm	mm
.X	±0.38	.X	±2°	SHEET SIZE	A4
.XX	±0.25	.XX	±1°	SERIES	LL1046-2

DRAWING TYPE: CUSTOMER  
SCALE: 1:1  
SHEET: 1 OF 1  
DRAWING NO.

**慈溪蓝翎电子有限公司**  
CIXI LANLING ELECTRONICS CO., LTD.

**LNLL**  
慈溪电子

TITLE: D-SUB CONNECTOR IDC TYPE