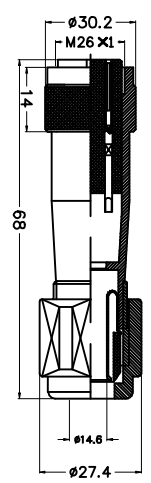
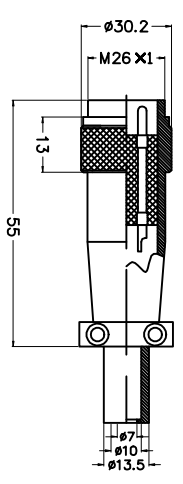
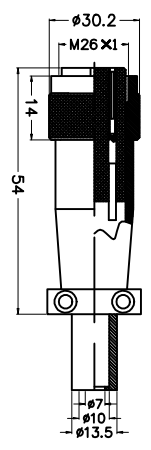
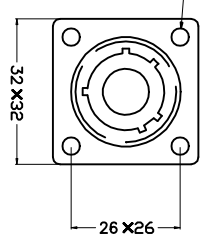
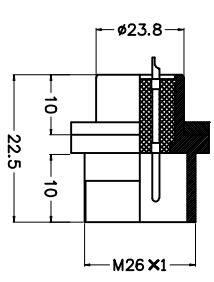
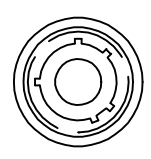
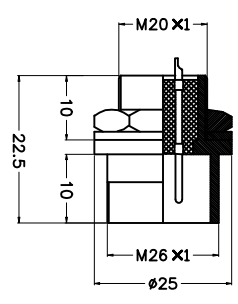


REV.	DESCRIPTION	DRAWN	CHECKED	APPROVED
A	NEW RELEASE	ZQJ 11/18/2015	~	ZQJ 11/18/2015
B	ADD P/N CODE	CJJ 11/18/2015	~	CJJ 11/18/2015

PLS24 系列 3T-19T



系列/规格 Shell code	插孔数 Contact arrangement on order, depending on shell and female Pin assignment	额定电压/额定 电流 Current rating/voltage	工作电压 (AC) 17 分种 额定电压 (AC) 17 分种 Operates 17kV voltage (AC, 1, sec)	额定电压 (DC) 17 分种 额定电压 (DC) 17 分种 Operates 17kV voltage (DC, 1, sec)	插孔间距 (mm) 17 分种 插孔间距 (mm) 17 分种 Pitch (mm) 17 分种	插孔直径 (mm) 17 分种 插孔直径 (mm) 17 分种 Pin diameter (mm) 17 分种	插孔长度 (mm) 17 分种 插孔长度 (mm) 17 分种 Pin length (mm) 17 分种	插孔直径公差 (mm) 17 分种 插孔直径公差 (mm) 17 分种 Pin diameter tolerance (mm) 17 分种
PLS24-3	3	12A-250V	250	1200	2000	10	2	2.5
PLS24-4	4	12A-250V	250	1500	2000	10	2	2.5
PLS24-8	8	16A-250V	250	1500	2000	10	1.7	1.6
PLS24-9	9	16A-250V	250	1500	2000	10	1.7	1.6
PLS24-10	10	16A-250V	250	1500	2000	10	1.7	1.6
PLS24-11	11	16A-250V	250	1500	2000	10	1.7	1.6
PLS24-12	12	17A-250V	250	1500	2000	10	1.7	1.6
PLS24-13	13	17A-250V	250	1500	2000	10	1.7	1.6
PLS24-15	15	17A-250V	250	1500	2000	10	1	1
PLS24-17	17	17A-250V	250	1500	2000	10	1	1
PLS24-19	19	17A-250V	250	1500	2000	10	1	1

GENERAL TOLERANCE	ANGLE TOLERANCE
X, ±0.60	X, ±5°
.X, ±0.38	.X, ±3°
.XX, ±0.25	.XX, ±2°

PROJECTION	TITLE
UNITS: mm	PLS24 Micro Jack Connector
SHEET SIZE: A4	SERIES: PLS24

ITEM	PART NAME	SCALE	DRAWING NO.
2	CONTACT	1:1	1 OF 1
1	HOUSING		

LANLING 慈溪蓝翎电子有限公司  
CIXI LANLING ELECTRONICS CO., LTD.