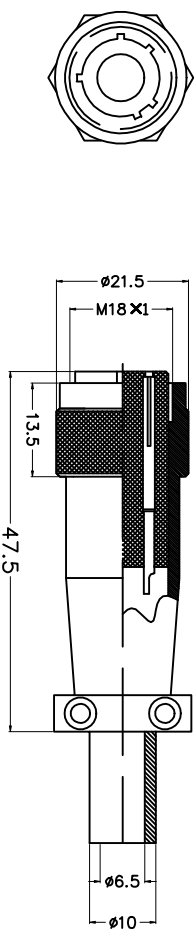
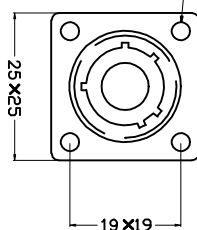
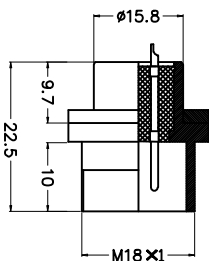
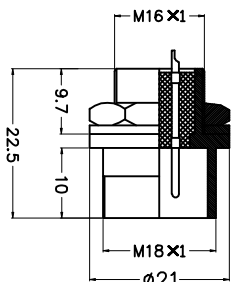


REV.	DESCRIPTION	DRAWN	CHECKED	APPROVED
A	NEW RELEASE	ZQJ 11/18/2015	~	ZQJ 11/18/2015
B	ADD P/N CODE	CJJ 11/18/2015	~	CJJ 11/18/2015

PLS16 系列 2T-9T



壳型尺寸 Shell size	PLS16-2	PLS16-3	PLS16-4	PLS16-5	PLS16-6	PLS16-7	PLS16-8	PLS16-9
壳型尺寸 (G.T) 壳型 Current rating/voltage	7A-150V	7A-150V	7A-150V	7A-150V	7A-150V	7A-150V	7A-150V	7A-150V
壳型尺寸 (G.T) 壳型 Current rating/voltage	250	250	250	250	250	250	250	250
壳型尺寸 (G.T) 壳型 Operating voltage (V rms)	150V	150V	150V	150V	150V	150V	150V	150V
壳型尺寸 (G.T) 壳型 Maximum insulation resistance (MΩ)	2000	2000	2000	2000	2000	2000	2000	2000
壳型尺寸 (G.T) 壳型 Operating temperature (°C)	10	10	10	10	10	10	10	10
壳型尺寸 (G.T) 壳型 Operating temperature range (°C)	1.7	1.7	1	1	1	1	1	1
壳型尺寸 (G.T) 壳型 Slider travel distance	1.6	1.6	1	1	1	1	1	1

GENERAL TOLERANCE	ANGLE TOLERANCE
X, ±0.60	X, ±5°
.X, ±0.38	.X, ±3°
.XX, ±0.25	.XX, ±2°

2	CONTACT	DRAWING TYPE		CUSTOMER	
1	HOUSING	SCALE	1:1	SHEET	1 OF 1
ITEM	PART NAME	DRAWING NO.			

PROJECTION	UNIT	TITLE
第一角投影	mm	PLS16 Micro Jack Connector
SHEET SIZE	A4	SERIES
		PLS16

慈溪蓝翎电子有限公司
CIXI LANLING ELECTRONICS CO., LTD.