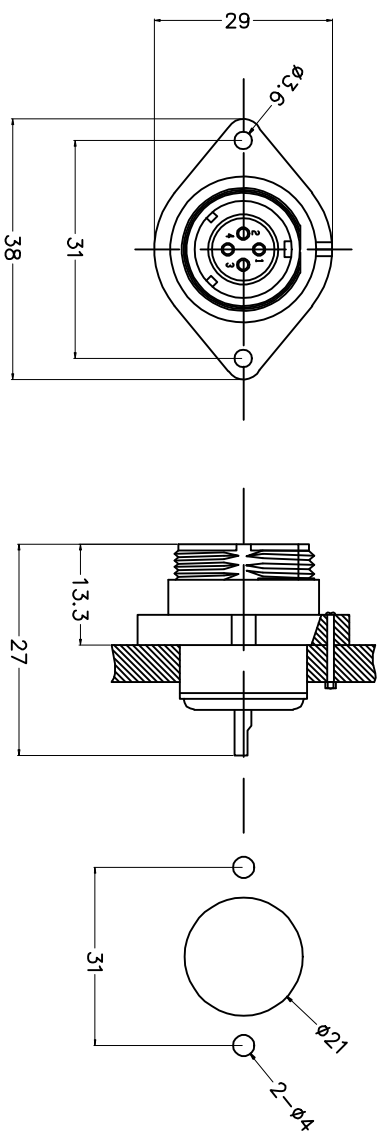


REV.	DESCRIPTION	DRAWN	CHECKED	APPROVED
A	NEW RELEASE	ZQJ 11/18/2015	~	ZQJ 11/18/2015
B	ADD P/N CODE	CJJ 11/18/2015	~	CJJ 11/18/2015



2孔法兰插座
2-hole flange
与LL2110相配
Mate with LL2110

数量 Number of contact	排列图 Pin contact Two View	排列图 Pin contact Two View	排列图 Pin contact Two View	排列图 Pin contact Two View	排列图 Pin contact Two View	排列图 Pin contact Two View	排列图 Pin contact Two View	排列图 Pin contact Two View	排列图 Pin contact Two View	排列图 Pin contact Two View	排列图 Pin contact Two View
2											
30 A	30 A	30 A	30 A	30 A	5A 30A	15 A	15 A	5 A	5 A		
接触直径 Contact diameter	Φ 3X2	Φ 3X3	Φ 3X4	Φ 3X5	Φ 1X3 Φ 3X2	Φ 2X5	Φ 2X7	Φ 1X9	Φ 1X12		
插针间距 Terminal pitch	间距/间距 pitch/pitch	间距/间距 pitch/pitch	间距/间距 pitch/pitch	间距/间距 pitch/pitch	间距/间距 pitch/pitch	间距/间距 pitch/pitch	间距/间距 pitch/pitch	间距/间距 pitch/pitch	间距/间距 pitch/pitch		
额定电压 (AC, V) Rated voltage (AC, V)	500V	500V	500V	500V	500V	500V	500V	500V	400V		
额定电压 (DC, V) Rated voltage (DC, V)	1500V	1500V	1500V	1500V	1500V	1500V	1500V	1500V	1200V		
接触电阻 (mΩ) Contact resistance	1	1	1	1	5.1	2.5	2.5	5	5		
插针长度 (mm) Pin size (mm)	≤4.0/11	≤4.0/11	≤4.0/11	≤4.0/11	≤4.0/11 ≤4.0/11	≤4.0/11	≤4.0/11	≤4.0/11	≤4.0/11		

GENERAL TOLERANCE	ANGLE TOLERANCE
X ±0.60	X ±5°
.X ±0.38	.X ±3°
.XX ±0.25	.XX ±2°

PROJECTION	TITLE
UNITS mm	M21 Waterproof Connector
SHEET SIZE A4	SERIES LL-2113/P LL-2113/S

ITEM	PART NAME	SCALE	DRAWING NO.	SHEET	1 OF 1
2	CONTACT	1:1			
1	HOUSING				
1	PART NAME				

慈溪蓝翎电子有限公司
CIXI LANLING ELECTRONICS CO., LTD.