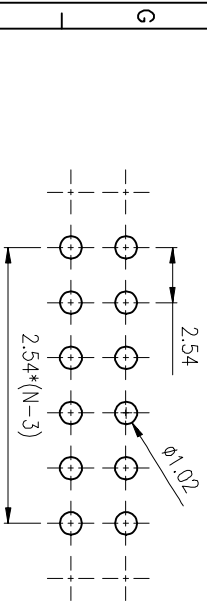
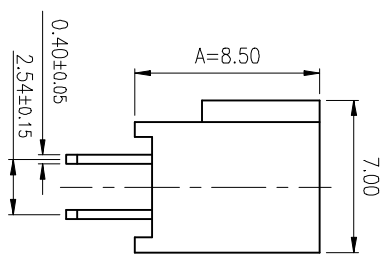
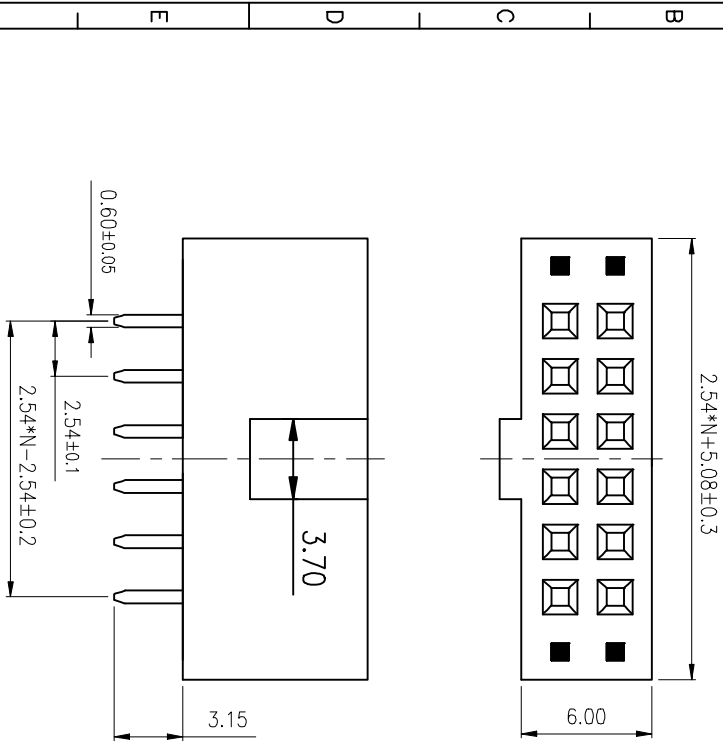


REV.	DESCRIPTION	DRAWN	CHECKED	APPROVED
A	NEW WIRE REFERENCE	ZQJ 08/28/2014	~	ZQJ 11/18/2014
B	ADD P/N CODE	CJJ 11/18/2014	~	

NOTES:

- SPECIFICATION
 - TEMPERATURE: -40° to $+105^{\circ}\text{C}$.
 - DIELECTRIC WITHSTANDING VOLTAGE: AC 500V AC.
 - INSULATION RESISTANCE: 1000M Ω
 - CURRENT RATING: 3Amps.
 - CONTACT RESISTANCE: 30m Ω .max.



RECOMMAND PCB LAYOUT(TOLERANCE=±0.05)

GENERAL TOLERANCE		ANGLE	TOLERANCE
X	±0.60	X	±5°
.X	±0.38	.X	±3°
.XX	±0.25	.XX	±2°

DRAWING TYPE	CUSTOMER	SHEET	1 OF 1
SCALE	1:1		
DRAWING NO.			

PROJECTION	TITLE
UNITS	2.54mm FEMALE HEADER
SHEET SIZE	FOR "BOX HEADER" MATING
A4	LL1014-4A

慈溪蓝翎电子有限公司
CIXI LANLING ELECTRONICS CO., LTD.

1 2 3 4 5 6 7 8