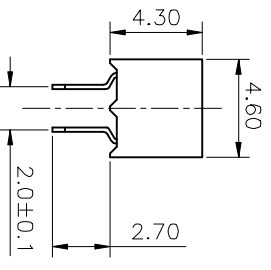
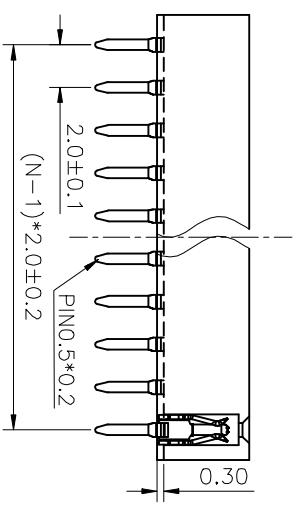
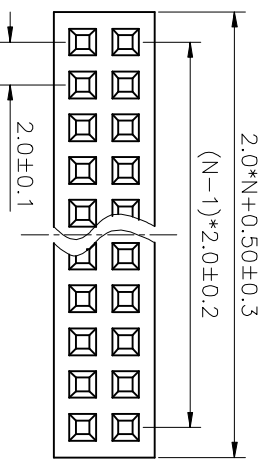
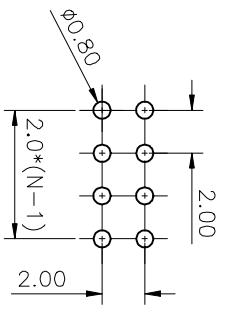


REV.	DESCRIPTION	DRAWN	CHECKED	APPROVED
A	NEW RELEASE	ZQJ 11/18/2014	~	ZQJ 11/18/2014
B	ADD P/N QDR	CJJ 11/18/2014	~	



N: NUMBER OF CONTACTS/2



RECOMMEND PCB LAYOUT
(TOLERANCE=±0.05)

NOTES:

- ELECTRICAL CHARACTERISTICS:
 - CONTACT RESISTANCE: 20mΩ Max. INITIAL.
 - DIELECTRIC WITHSTANDING VOLTAGE: 500V AC(rms) FOR 1 MINUTE.
 - INSULATION RESISTANCE: 1000MΩ Min.
- ENVIRONMENT CHARACTERISTICS:
 - TEMPERATURE: -40°C~+105°C.

GENERAL TOLERANCE	ANGLE	TOLERANCE	PROJECTION	TITLE	FEMALE HEADER PITCH 2.0mm
X. ±0.60	X. ±5°	UNITS	mm		
X. ±0.38	X. ±3°	SHEET SIZE	A4	SERIES	LL1017-3
.XX ±0.25	.XX ±2°	DRAWING TYPE	CUSTOMER		
SCALE	1:1	SHEET	1 OF 1		
DRAWING NO.					

慈溪蓝翎电子有限公司
CIXI LANLING ELECTRONICS CO., LTD.

