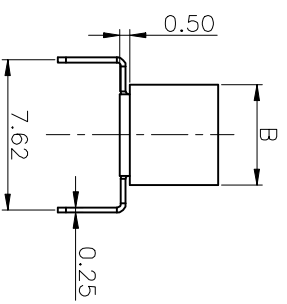
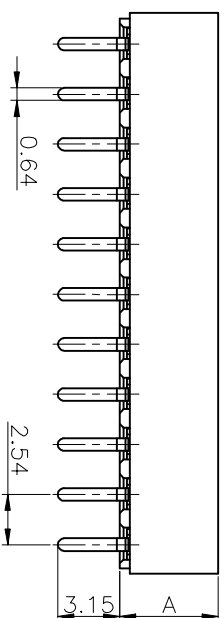
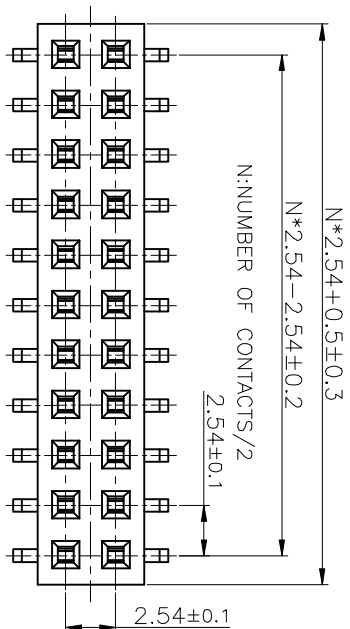
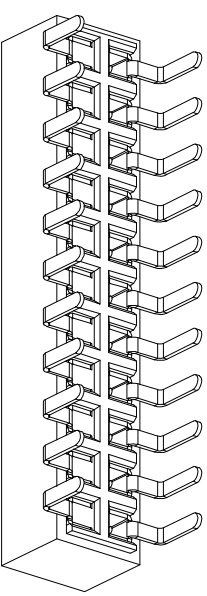


REV.	DESCRIPTION	DRAWN	CHECKED	APPROVED
A	NEW RELEASE	ZQJ 11/18/2014	~	ZQJ 11/18/2014
B	ADD P/N CODE	CJJ 11/18/2014	~	



DIM.	A	B
TYPE 1	8.50	5.40
TYPE 2	5.00	5.00

- NOTES:
- MATERIAL
 - INSULATOR MATERIAL: THERMOPLASTIC(UL 94V-0).
 - CONTACT MATERIAL: COPPER ALLOY.
 - SPECIFICATION
 - TEMPERATURE: -40° to $+105^{\circ}$ C.
 - DIELECTRIC WITHSTANDING VOLTAGE: AC 500V AC.
 - INSULATION RESISTANCE: $1000M\Omega$ min.
 - CURRENT RATING: 3A.



GENERAL TOLERANCE	ANGLE TOLERANCE
X, ± 0.60	X, $\pm 5^{\circ}$
X, ± 0.38	X, $\pm 3^{\circ}$
.XX, ± 0.25	.XX, $\pm 2^{\circ}$

PROJECTION	TITLE
UNITS	2.54mm FEMALE HEADER
SHEET SIZE	BOTTOM ENTRY TYPE H=8.5/5.0mm
A4	SERIES LL1015-2F

慈溪蓝翎电子有限公司
CIXI LANLING ELECTRONICS CO., LTD.

DRAWING TYPE	CUSTOMER	SHEET	1 OF 1
SCALE	1:1	SHEET	1 OF 1
DRAWING NO.			