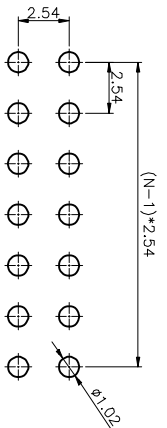
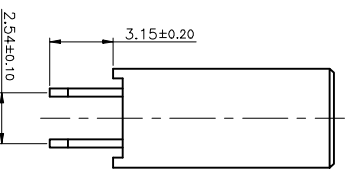
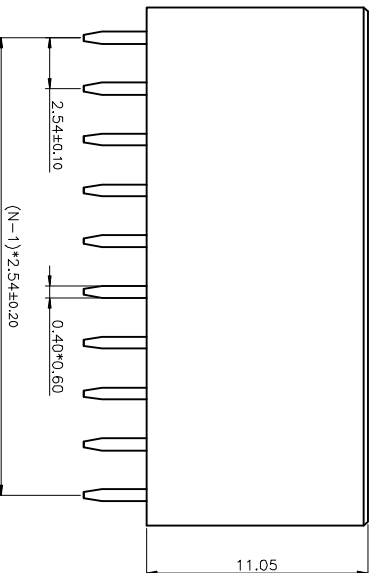
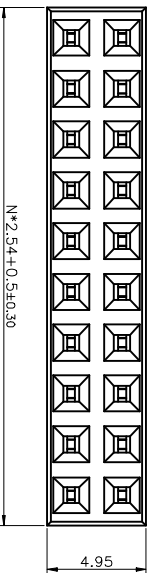


REV.	DESCRIPTION	DRAWN	CHECKED	APPROVED
A	NEW RELEASE	ZQJ 11/18/2014	~	ZQJ 11/18/2014
B	ADD P/N CODE	CJJ 11/18/2014	~	



RECOMMEND PCB LAYOUT
(TOLERANCE=±0.05)

- NOTES:
- MATERIAL
 - INSULATOR MATERIAL:THERMOPLASTIC(UL 94V-0).
 - CONTACT MATERIAL: COPPER ALLOY.
 - SPECIFICATION
 - TEMPERATURE:-40° to +105°C.
 - DIELECTRIC WITHSTANDING VOLTAGE:AC 500V AC.
 - INSULATION RESISTANCE:1000MΩ min.
 - CURRENT RATING:3A.

GENERAL TOLERANCE		ANGLE TOLERANCE		PROJECTION		TITLE	
X.	±0.60	X.	±5°	⊕	mm	2.54mm Female Header	
.X	±0.38	.X	±3°	▽	S/T	H=11.05MM	
.XX	±0.25	.XX	±2°				
DRAWING TYPE CUSTOMER				SHEET SIZE A4			
SCALE 1:1				SERIES LL1015-1H			
DRAWING NO. C-DS1023-22-XXX-A				SHEET 1 OF 1			

慈溪蓝翎电子有限公司
CIXI LANLING ELECTRONICS CO., LTD.