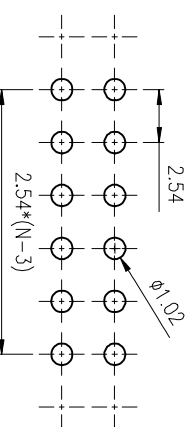
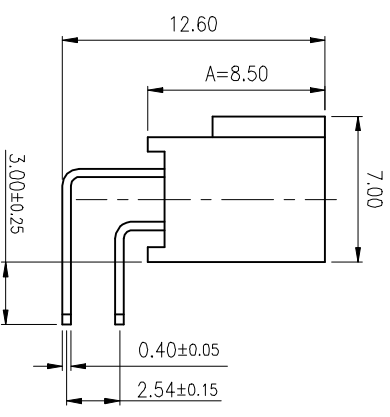
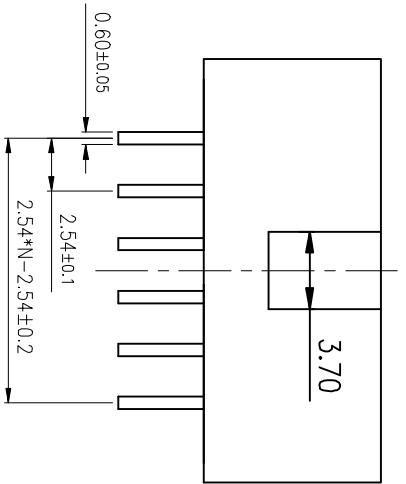
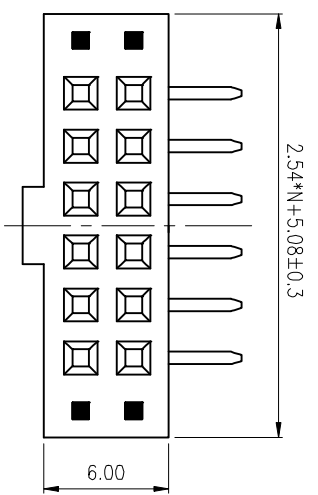


REV.	DESCRIPTION	DRAWN	CHECKED	APPROVED
A	NEW RELEASE	ZQJ 11/18/2014	~	ZQJ 11/18/2014
B	ADD P/N CODE	CJJ 11/18/2014	~	

**NOTES:**

1. SPECIFICATION
  - 1.1 TEMPERATURE: -40° to +105°C.
  - 1.2 DIELECTRIC WITHSTANDING VOLTAGE: AC 500V AC.
  - 1.3 INSULATION RESISTANCE: 1000MΩ
  - 1.4 CURRENT RATING: 3Amps.
  - 1.5 CONTACT RESISTANCE: 30mΩ max.



RECOMMAND PCB LAYOUT(TOLERANCE=±0.05)

GENERAL TOLERANCE	ANGLE	TOLERANCE	PROJECTION
X, ±0.60	X, ±5°	X, ±5°	mm
X, ±0.38	X, ±3°	X, ±3°	A4
.XX, ±0.25	.XX, ±2°	.XX, ±2°	Series

DRAWING TYPE	CUSTOMER	SHEET	1 OF 1
SCALE	1:1		
DRAWING NO.			

**慈溪蓝翎电子有限公司**  
CIXI LANLING ELECTRONICS CO., LTD.

2.54mm FEMALE HEADER  
FOR "BOX HEADER" MATING

Series L.L1015-1C