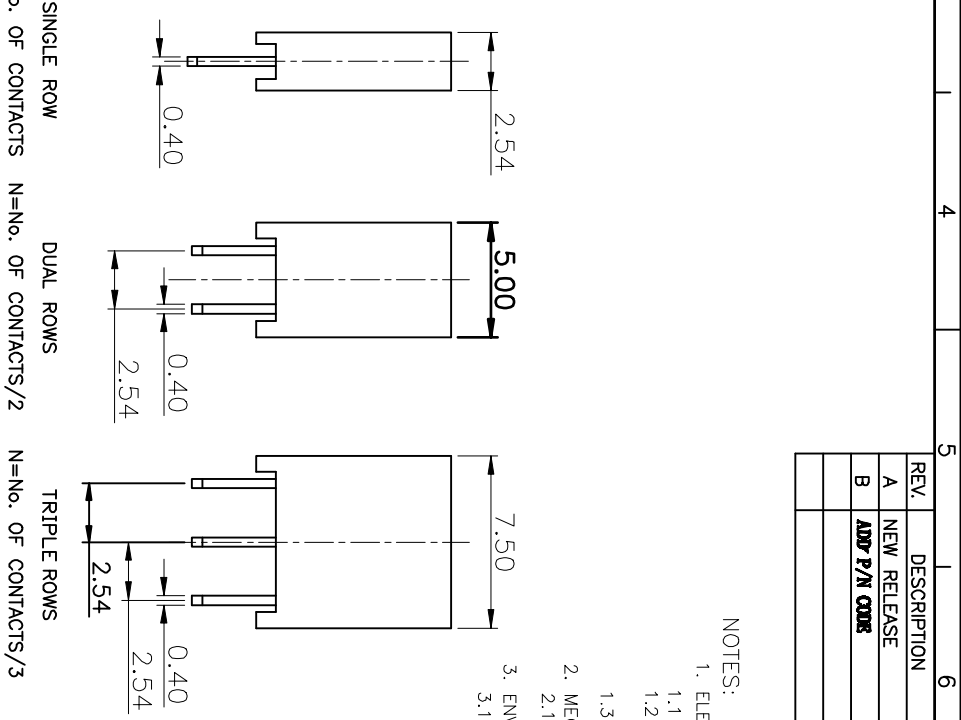
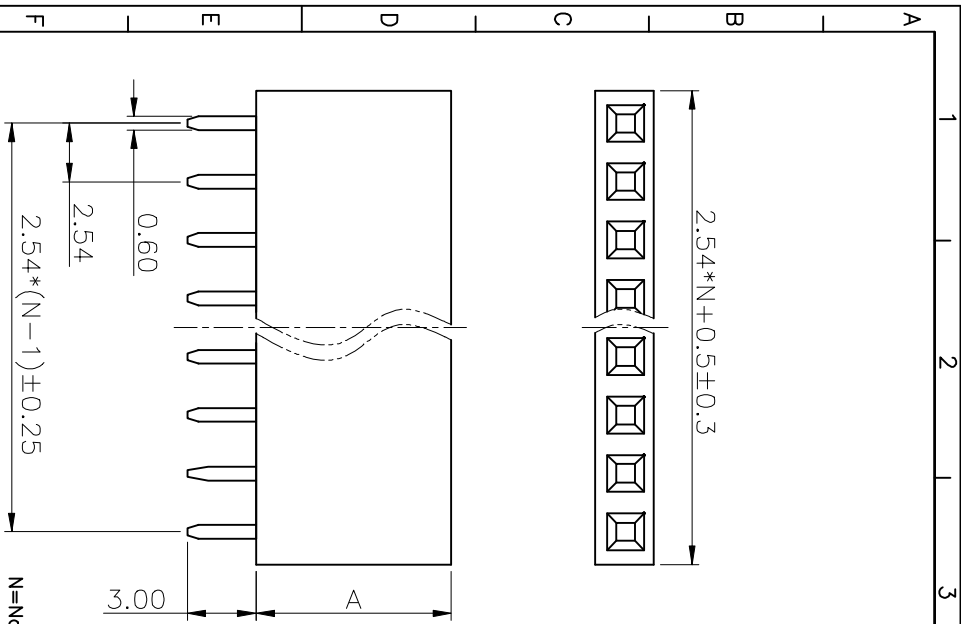


REV.	DESCRIPTION	DRAWN	CHECKED	APPROVED
A	NEW RELEASE	ZQJ 11/18/2014	~	ZQJ 11/18/2014
B	ADD P/N CODES	CJJ 11/18/2014	~	

NOTES:

- ELECTRICAL CHARACTERISTICS:
 - CONTACT RESISTANCE: 20mΩ Max. INITIAL.
 - DIELECTRIC WITHSTANDING VOLTAGE: 500V AC(rms) FOR 1 MINUTE.
 - INSULATION RESISTANCE: 1000MΩ Min.
- MECHANICAL CHARACTERISTICS:
 - CONTACT RETENTION FORCE: 500gf Min.
- ENVIRONMENT CHARACTERISTICS:
 - TEMPERATURE RANGE: -40°C ~ +105°C.



GENERAL TOLERANCE		ANGLE TOLERANCE		PROJECTION	
X.	±0.60	X.	±5°	UNITS	mm
.X	±0.38	.X	±3°	SHEET SIZE	A4
.XX	±0.25	.XX	±2°	SHEET	LL1014-1A/1B/1C

DRAWING TYPE		SCALE		DRAWING NO.	
CUSTOMER	1:1	SHEET	1 OF 1		



慈溪蓝翎电子有限公司
CIXI LANLING ELECTRONICS CO., LTD.

1 2 3 4 5 6 7 8