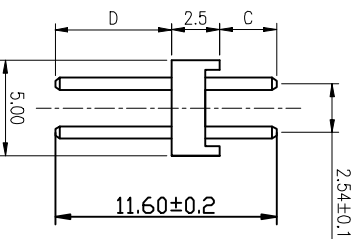
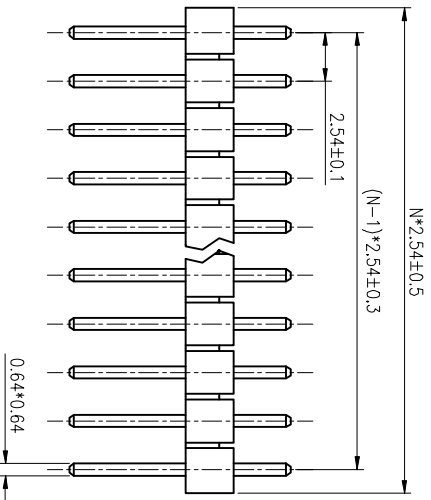


REV.	DESCRIPTION	DRAWN	CHECKED	APPROVED
A	NEW RELEASE	ZQJ 11/18/2014	~	ZQJ 11/18/2014
B	ADD P/N CODE	CJJ 11/18/2014	~	

DUAL ROWS
 N:NUMBER OF CONTACTS/2
 C/D:CUSTOMER LENGTH AVAILABLE



- NOTES:
- ELECTRICAL CHARACTERISTICS:
 - CONTACT RESISTANCE: 20mΩ Max.
 - DIELECTRIC WITHSTANDING VOLTAGE: 500V AC(rms) FOR 1 MINUTE.
 - INSULATION RESISTANCE: 1000MΩ Min.
 - ENVIRONMENT CHARACTERISTICS:
 - TEMPERATURE: -40°C~+105°C.

ITEM	PART NAME	PART NO.	MATERIALS	FINISHED	DRAWING NO.	SCALE	DRAWING TYPE	CUSTOMER	SHEET	1 OF 1
1	HOUSING		THERMOPLASTIC	UL 94 V-0						
2	CONTACT		COPPER ALLOY	GOLD OR TIN PLATED						

GENERAL TOLERANCE	ANGLE TOLERANCE	PROJECTION UNITS	TITLE
X ±0.60 X ±0.38 XX ±0.25	X ±5° X ±3° XX ±2°	mm	2.54mm 2#40Pin Header S/T

PROJECTION UNITS	SHEET SIZE	A4	SERIES	LL1009-2A
mm	A4			

慈溪蓝翎电子有限公司
 CIXI LANLING ELECTRONICS CO., LTD.