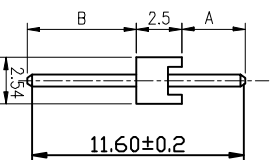
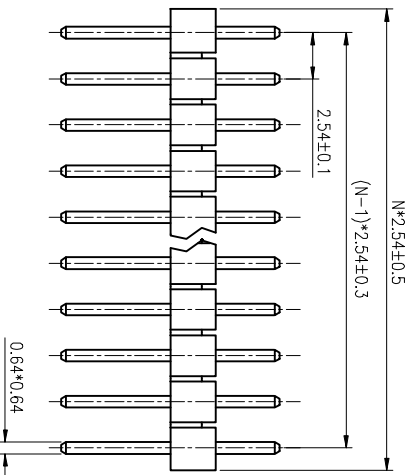


REV.	DESCRIPTION	DRAWN	CHECKED	APPROVED
A	NEW RELEASE	ZQJ 11/18/2014	~	ZQJ 11/18/2014
B	ADD P/N CODE	CJJ 11/18/2014	~	

SINGLE ROW
 N:NUMBER OF CONTACTS
 A/B:CUSTOMER LENGTH AVAILABLE



- NOTES:
- ELECTRICAL CHARACTERISTICS:
 - CONTACT RESISTANCE: 20mΩ Max.
 - DIELECTRIC WITHSTANDING VOLTAGE: 500V AC(rms) FOR 1 MINUTE.
 - INSULATION RESISTANCE: 1000MΩ Min.
 - ENVIRONMENT CHARACTERISTICS:
 - TEMPERATURE: -40°C~+105°C.

ITEM	PART NAME	PART NO.	MATERIALS	FINISHED	DRAWING NO.	SCALE	CUSTOMER	SHEET	1 OF 1
2	CONTACT		COPPER ALLOY	GOLD OR TIN PLATED					
1	HOUSING		THERMOPLASTIC	UL 94 V-0					

GENERAL TOLERANCE	ANGLE TOLERANCE	PROJECTION UNITS	TITLE
X, ±0.60	X, ±5°	mm	2.5mm 1x40Pin Reseder S/T Type
X, ±0.38	X, ±3°		
.XX, ±0.25	.XX, ±2°		

PROJECTION	UNITS	SHEET SIZE	SERIES
	mm	A4	LL1009-1A

慈溪蓝翎电子有限公司	
CIXI LANLING ELECTRONICS CO., LTD.	