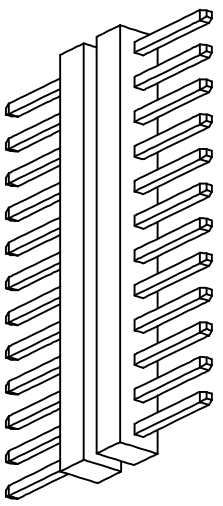
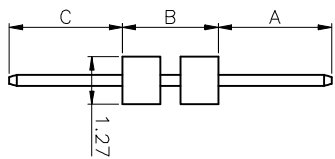
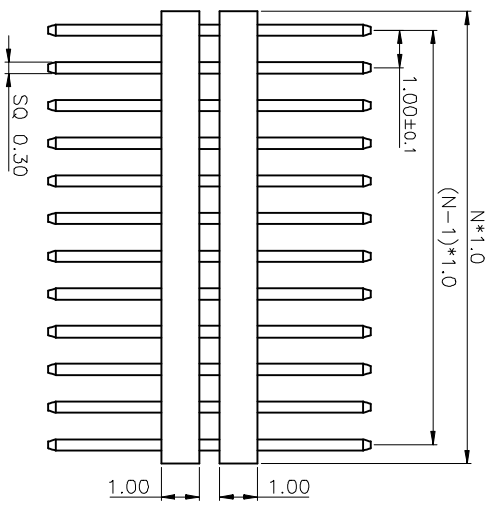
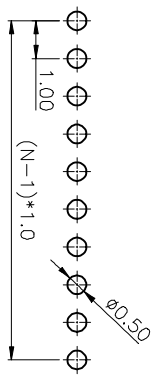


REV.	DESCRIPTION	DRAWN	CHECKED	APPROVED
A	NEW RELEASE	ZQJ 11/18/2014	~	ZQJ 11/18/2014
B	ADD P/N CODE	CJJ 11/18/2014	~	

- NOTES:
- MATERIAL
 - INSULATOR:THERMOPLASTIC(UL 94V-0);
 - CONTACT MATERIAL:COPPER ALLOY.
 - SPECIFICATION
 - CURRENT RATING:1.0 Amp.
 - INSULATION RESISTANCE:500MΩ Min.
 - DIELECTRIC WITHSTANDING:600VAC.
 - CONTACT RESISTANCE:20mΩ Max.
 - OPERATING TEMPERATURE:-40°C TO +105°C.



TYPE	DIM A	DIM B	DIM C
1	3.00	2.55	3.00
2			
3			
4			
5			
6			
7			
8			
9			
10			



RECOMMEND PCB LAYOUT(TOLERANCE=±0.05)

GENERAL TOLERANCE	ANGLE	TOLERANCE
X, .X	±0.60	X, ±5°
.XX	±0.38	.X, ±3°
.XXX	±0.25	.XX, ±2°

DRAWING TYPE	CUSTOMER	SCALE	DRAWING NO.
		1:1	

PROJECTION	TITLE	SINGLE ROW / PIN HEADER
UNIT	mm	PITCH 1.00mm STACK V/T TYPE
SHEET SIZE	A4	SERIES LL1013-04D

慈溪蓝翎电子有限公司
CIXI LANLING ELECTRONICS CO., LTD.