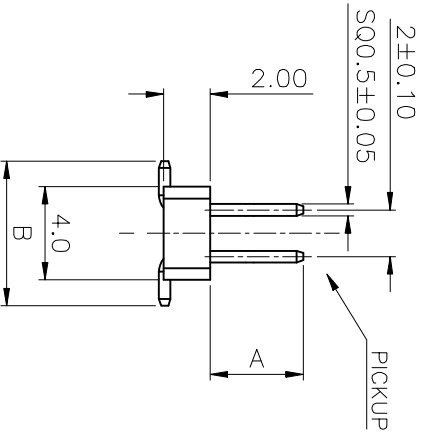
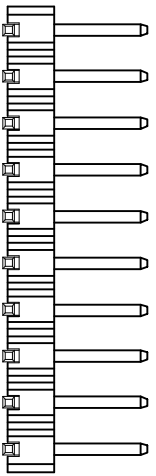
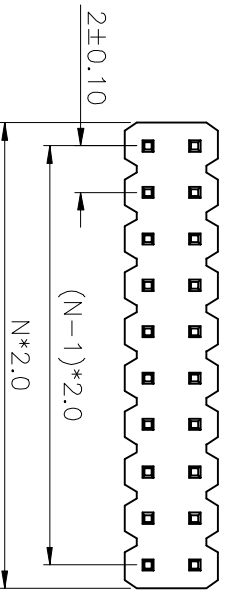
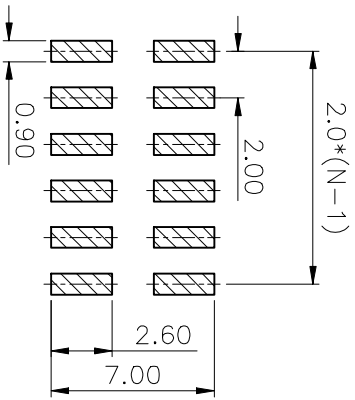


N=NUMBER OF CONTACTS/2



TYPE	DIM A	DIM B
1	4.00	6.20
2	3.50	6.20



RECOMMEND PCB LAYOUT
(TOLERANCE=±0.05)

REV.	DESCRIPTION	DRAWN	CHECKED	APPROVED
A	NEW RELEASE	ZQJ 11/18/2014	~	ZQJ 11/18/2014
B	ADD P/N CODE	CJJ 11/18/2014	~	

NOTES:

1. MATERIAL
 - 1.1 INSULATOR: THERMOPLASTIC(UL 94V-0).
 - 1.2 CONTACT MATERIAL: COPPER ALLOY.
2. SPECIFICATION
 - 2.1 CURRENT RATING: 1.5 Amp.
 - 2.2 INSULATION RESISTANCE: 1000MΩ Min.
 - 2.3 DIELECTRIC WITHSTANDING: 600VAC.
 - 2.4 CONTACT RESISTANCE: 20mΩ Max.
 - 2.5 OPERATING TEMPERATURE: -40°C TO +105°C.

GENERAL TOLERANCE ANGLE TOLERANCE

X.	±0.60	X.	±5°
.X	±0.38	.X	±3°
.XX	±0.25	.XX	±2°

DRAWING TYPE CUSTOMER

SCALE	1:1	SHEET	1 OF 1
-------	-----	-------	--------

DRAWING NO.

PROJECTION	TITLE
UNITS	2.0 PITCH PIN HEADER SMT TYPE
SHEET SIZE	A4
SERIES	LL1011-6A

慈溪蓝翎电子有限公司
CIXI LANLING ELECTRONICS CO., LTD.

慈溪电子