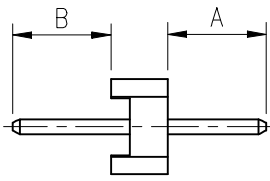
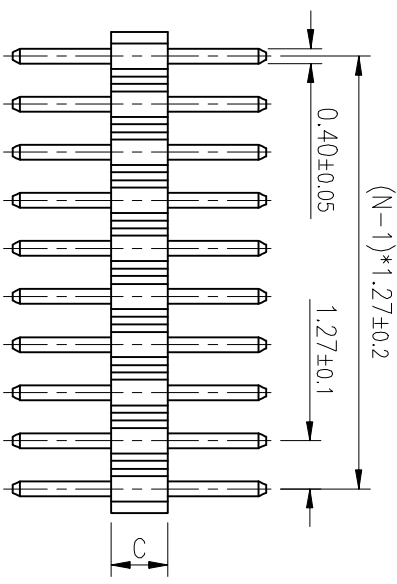
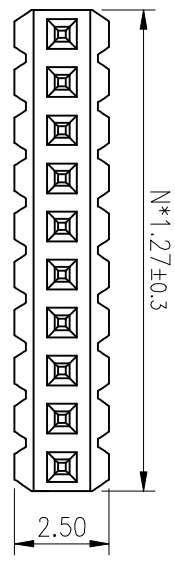


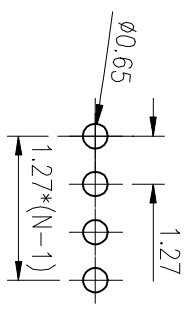
REV.	DESCRIPTION	DRAWN	CHECKED	APPROVED
A	NEW RELEASE	ZQJ 11/18/2014	~	ZQJ 11/18/2014
B	ADD P/N CODE	CJJ 11/18/2014	~	



N:NUMBER OF CONTACTS

18		10
19		11
20		12
21		13
22		14
23		15
24		16
25		17

TYPE	DIM A	DIM B
1	2.60	2.60
2		
3		
4		
5		
6		
7		
8		
9		

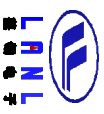


RECOMMEND PCB LAYOUT(TOLERANCE=±0.05)

NOTES:

- MATERIAL
  - INSULATOR:THERMOPLASTIC(UL 94V-0).
  - CONTACT MATERIAL:COPPER ALLOY.
- SPECIFICATION
  - CURRENT RATING:1.0 Amp.
  - INSULATION RESISTANCE:500MΩ Min.
  - DIELECTRIC WITHSTANDING:300VAC.
  - CONTACT RESISTANCE:20mΩ Max.
  - OPERATING TEMPERATURE:-40°C TO+105°C.

GENERAL TOLERANCE		ANGLE TOLERANCE		PROJECTION	
X.	±0.60	X.	±5°	UNITS	mm
.X	±0.38	.X	±3°	SHEET SIZE	A4
.XX	±0.25	.XX	±2°	TITLE	1.27mm PITCH PIN HEADER
DRAWING TYPE	CUSTOMER	SHEET	1 OF 1	SINGLE ROW STRAIGHT	
SCALE	1:1			SERIES	LL1013-01A
DRAWING NO.					



慈溪蓝翎电子有限公司  
CIXI LANLING ELECTRONICS CO., LTD.